



Shore
RESIDENCES
MALL OF ASIA COMPLEX



Life's a Sunny Day

- Take pleasure in the warmth of summer that is always in season at Shore Residences
- Everyday is a Vacation! There's nothing quite like a vacation at your very own home
- Not only does your home have a personal resort but your entire amenity extends outside to the Mall of Asia and surrounding parks and commercial areas



Location

Seaside Blvd. cor.
Sunrise Dr., MOA
Complex
Pasay City

Land Area

3.3 hectares

Buildings

4 Buildings
19 floors / bldg.
5,709 Units
816 Basement Parking
399 Ground Floor Parking
99 Commercial Parking

Property Features

All information stated is intended to give a general overview of the project. The developer reserves the right to modify as it sees fit without prior notice. For Announcement Purposes Only.

Vicinity Map



SMDC

The good guys!

All information stated is intended to give a general overview of the project. The developer reserves the right to modify as it sees fit without prior notice. For Announcement Purposes Only.

01 SHELL RESIDENCES



02 SHORE RESIDENCES



03 SEA RESIDENCES

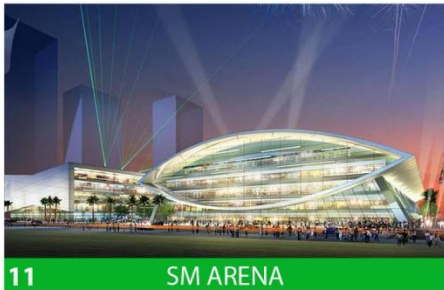
04 BLUE WAVE



12 SM MALL OF ASIA



05 A PLACE



11 SM ARENA



06 SOLAIRE RESORT & CASINO

10 SMDC SHOWROOM



09 ONE E-COM



08 TWO E-COM

07 BELLE GRANDE RESORT & CASINO

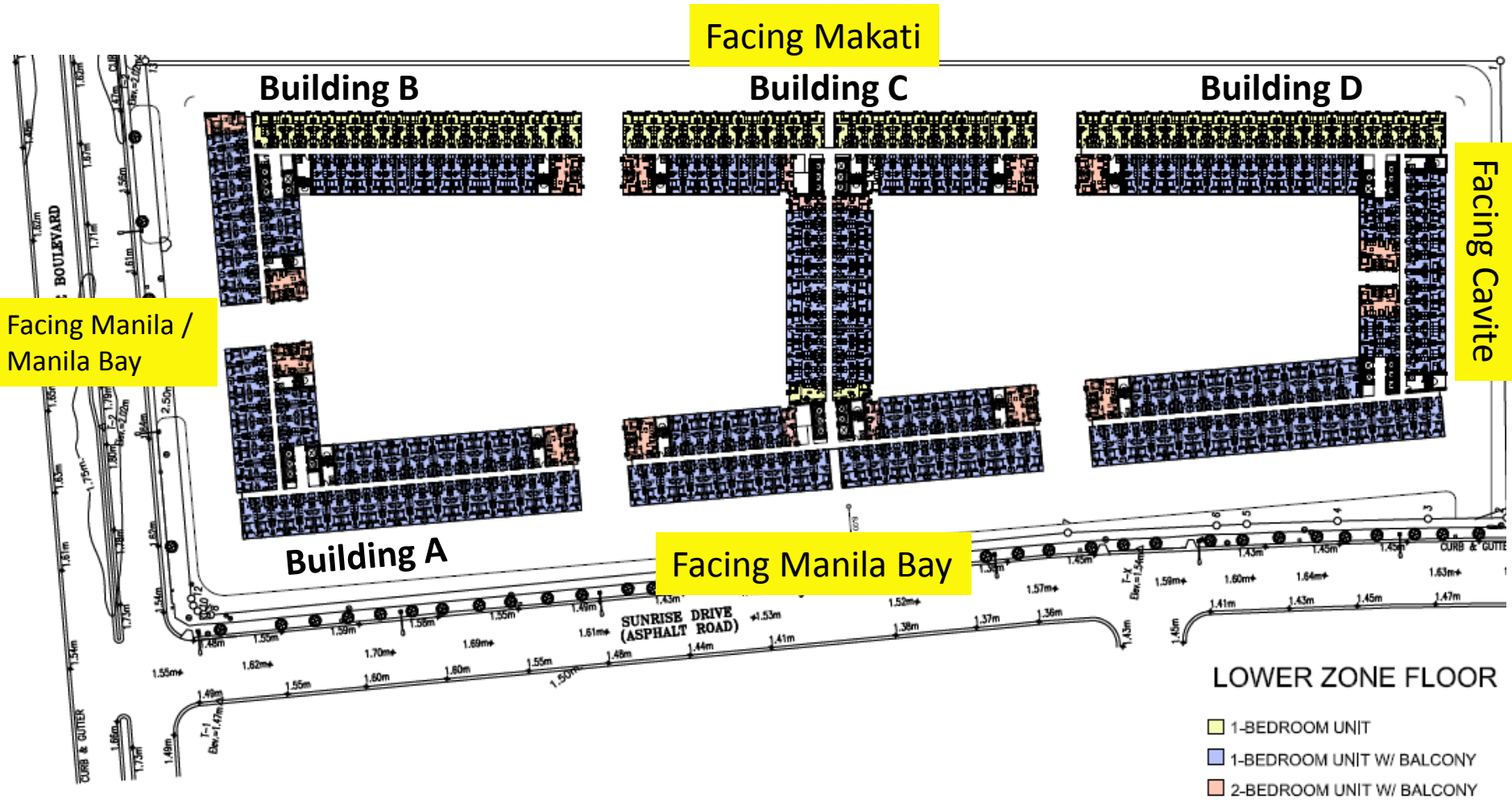


A person is silhouetted against a bright sunset over the ocean, carrying a surfboard under their arm. The sun is low on the horizon, creating a strong glow and reflecting on the water. The person's legs and the surfboard are the primary focus in the foreground.

Everyday Summer here at

SHORE RESIDENCES

Site Development Plan



The good guys!

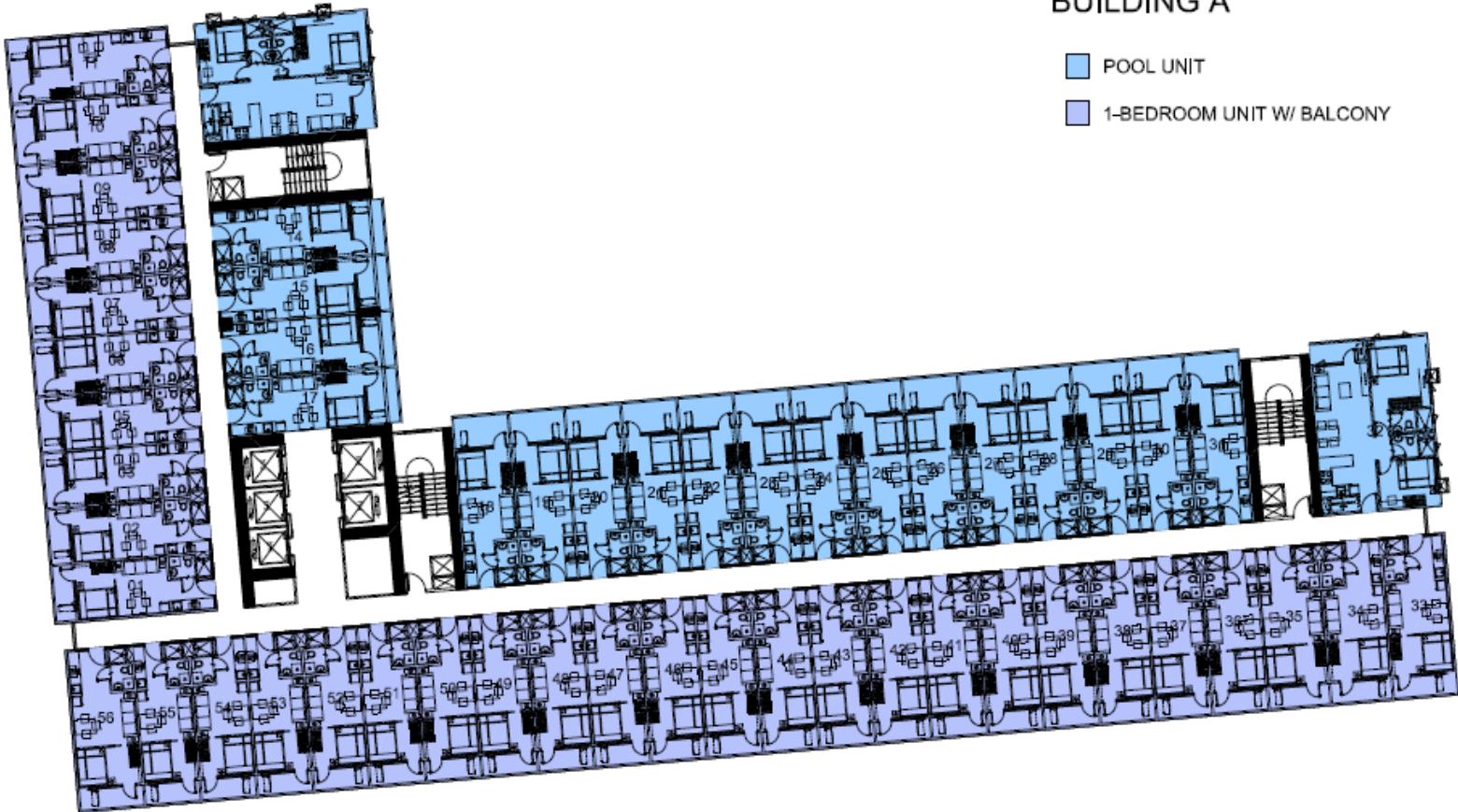
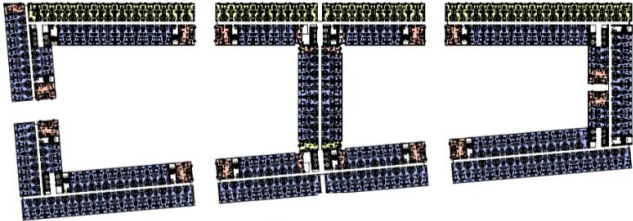
All information stated is intended to give a general overview of the project. The developer reserves the right to modify as it sees fit without prior notice. For Announcement Purposes Only.

Building Zones

*Applicable to all
the Buildings



Building A Floor Plan

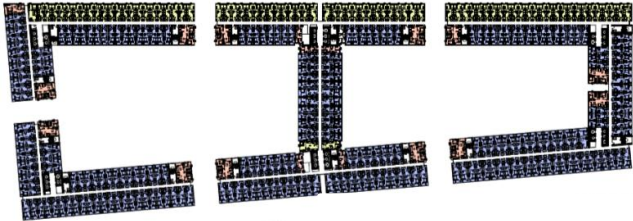


SMDC

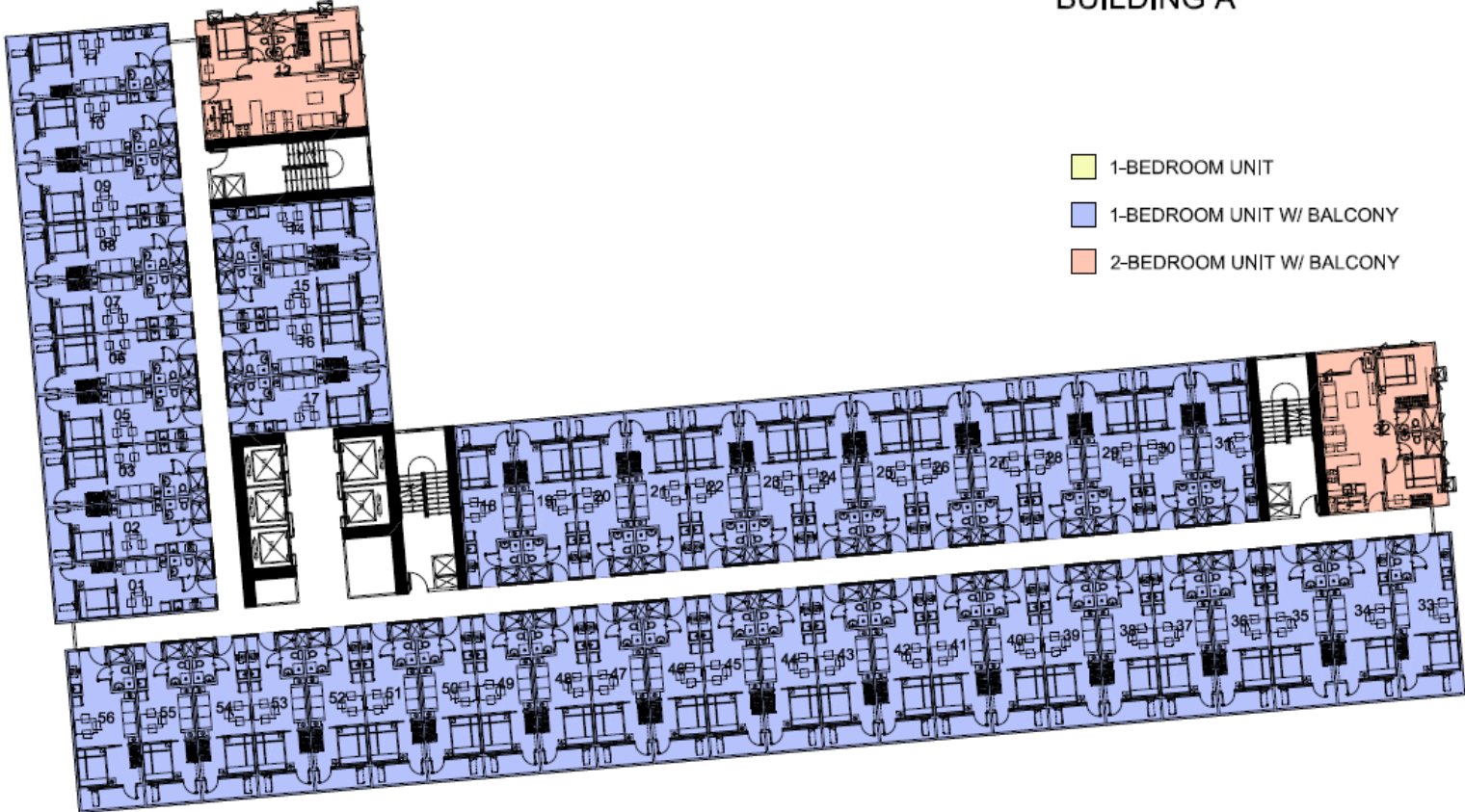
The good guys!

All information stated is intended to give a general overview of the project. The developer reserves the right to modify as it sees fit without prior notice. For Announcement Purposes Only.

Building A Floor Plan



5TH - 9TH FLOOR BUILDING A



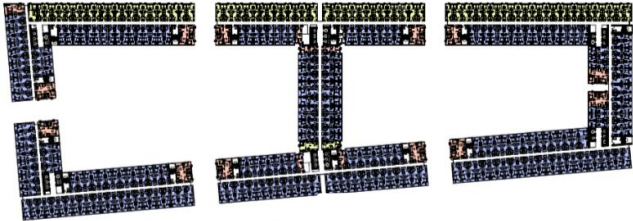
- 1-BEDROOM UNIT
- 1-BEDROOM UNIT W/ BALCONY
- 2-BEDROOM UNIT W/ BALCONY

SMDC

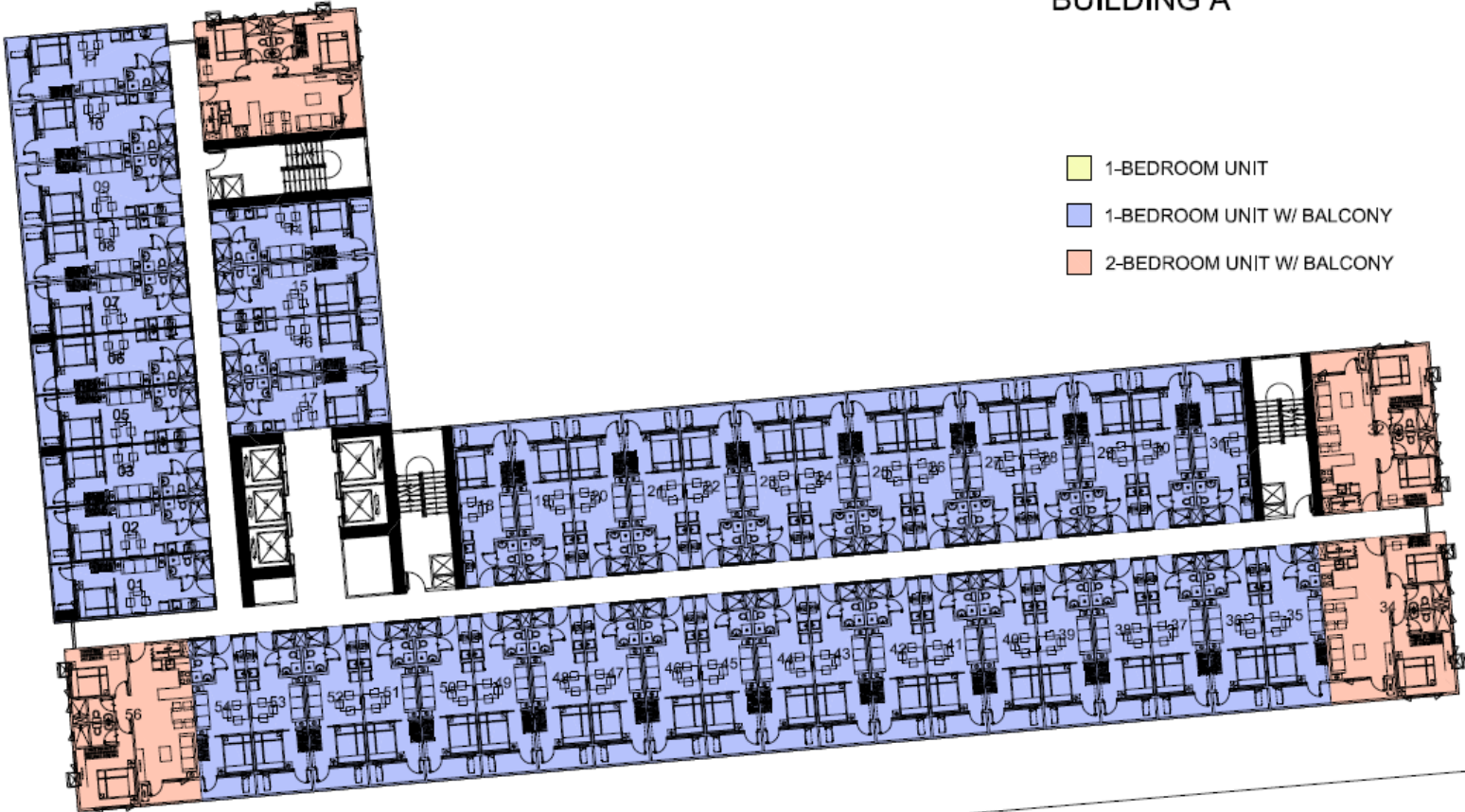
The good guys!

All information stated is intended to give a general overview of the project. The developer reserves the right to modify as it sees fit without prior notice. For Announcement Purposes Only.

Building A Floor Plan



10TH - 19TH FLOOR BUILDING A



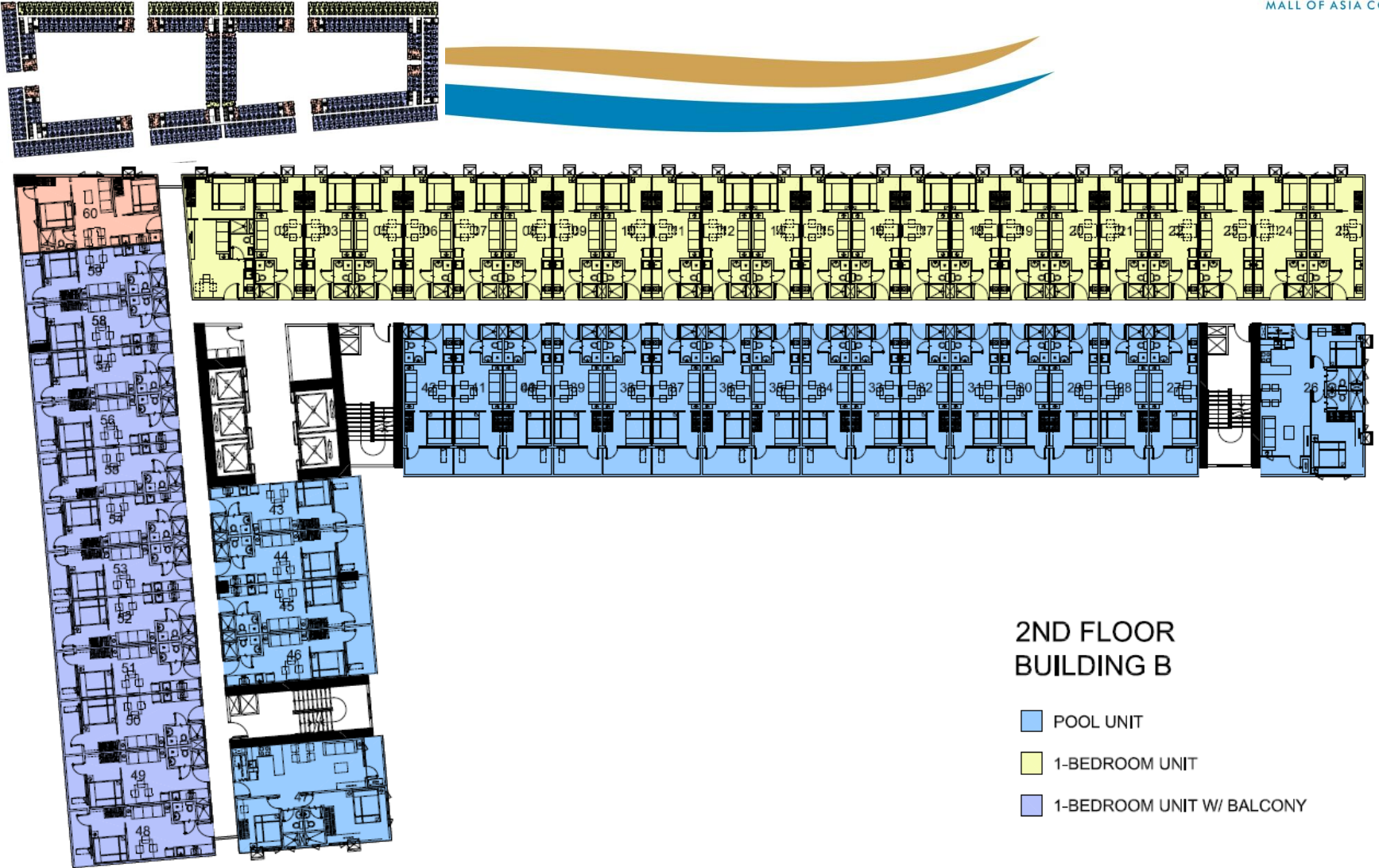
- 1-BEDROOM UNIT
- 1-BEDROOM UNIT W/ BALCONY
- 2-BEDROOM UNIT W/ BALCONY

SMDC

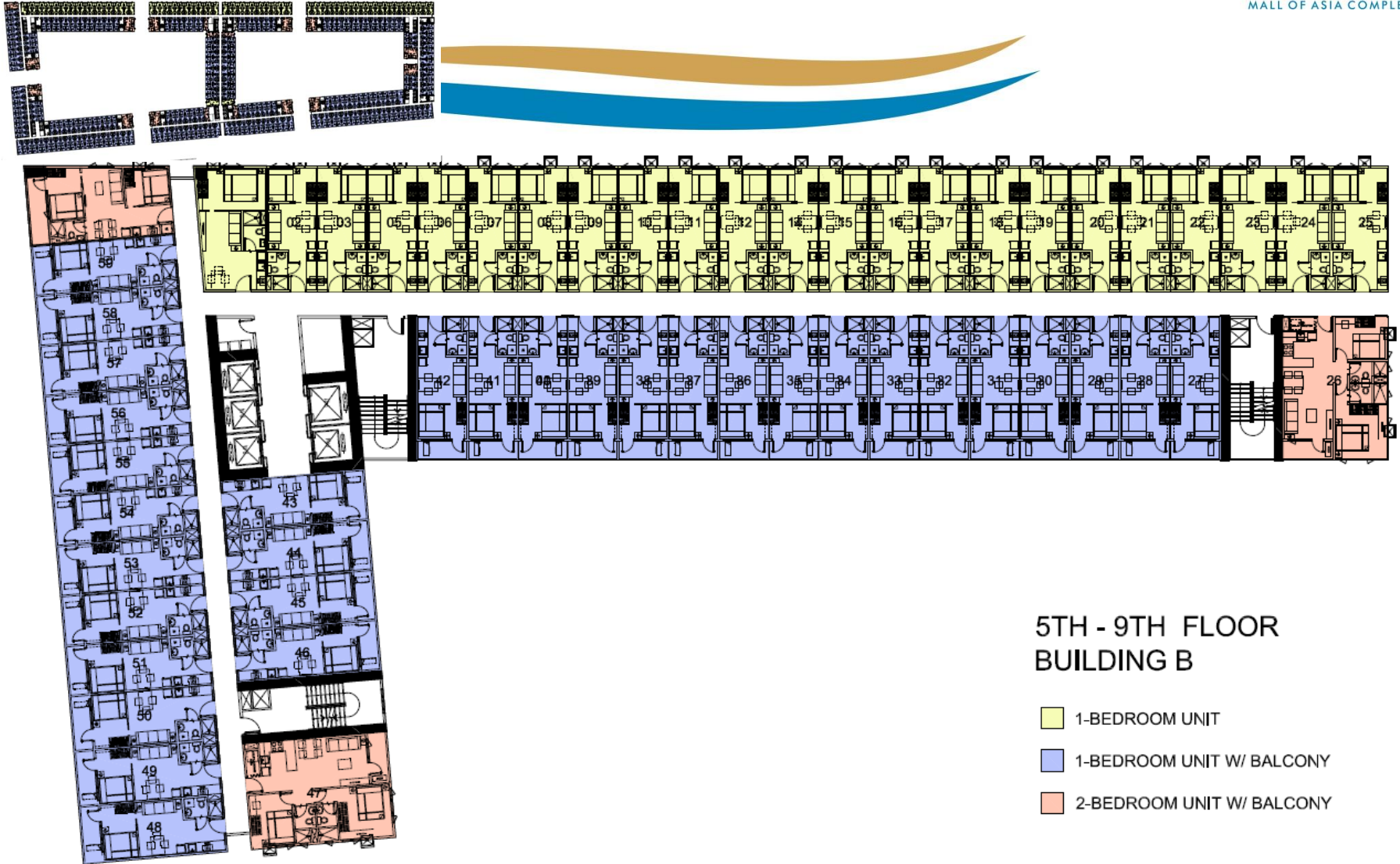
The good guys!

All information stated is intended to give a general overview of the project. The developer reserves the right to modify as it sees fit without prior notice. For Announcement Purposes Only.

Building B Floor Plan



Building B Floor Plan



5TH - 9TH FLOOR BUILDING B

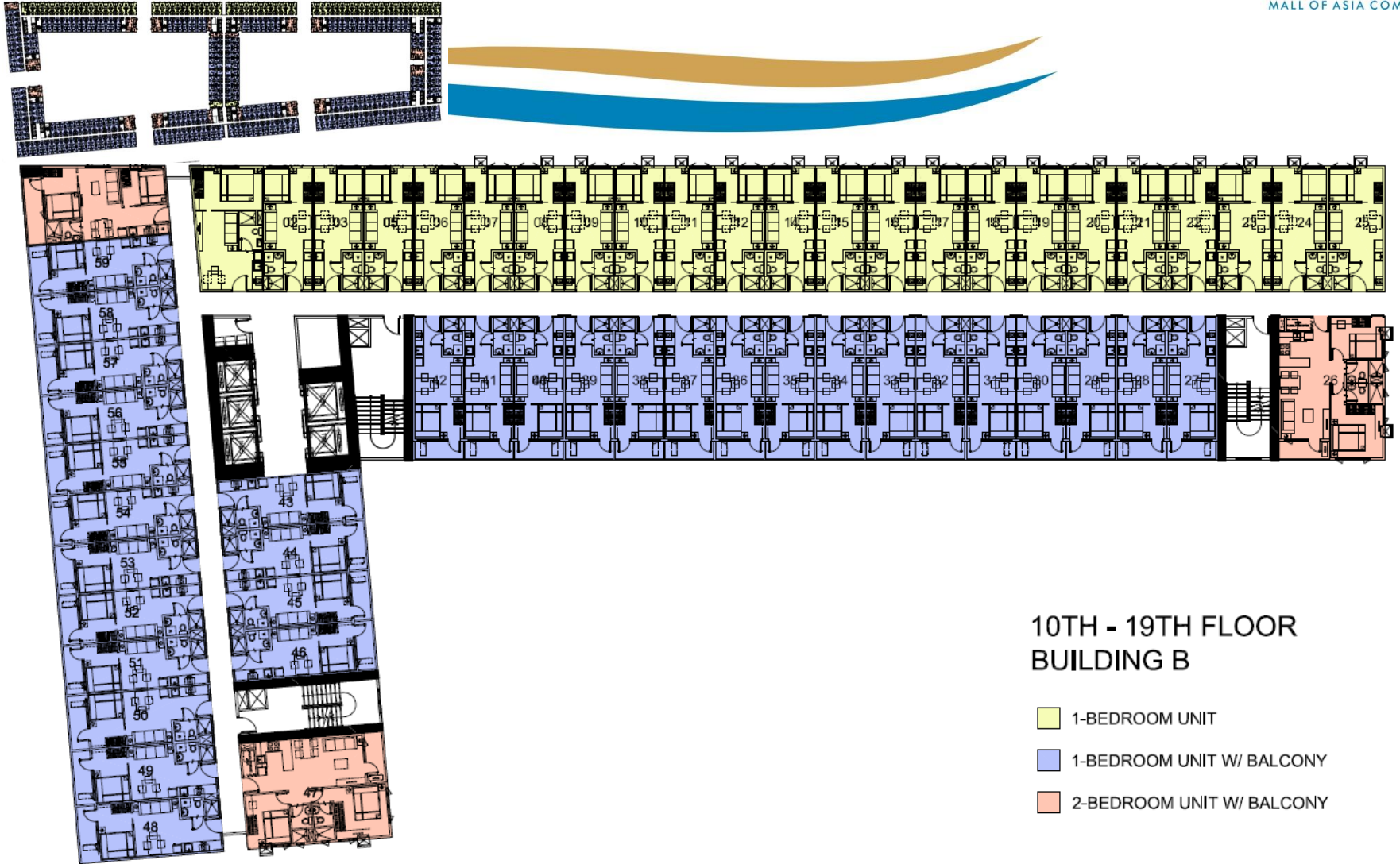
- 1-BEDROOM UNIT
- 1-BEDROOM UNIT W/ BALCONY
- 2-BEDROOM UNIT W/ BALCONY

SMDC

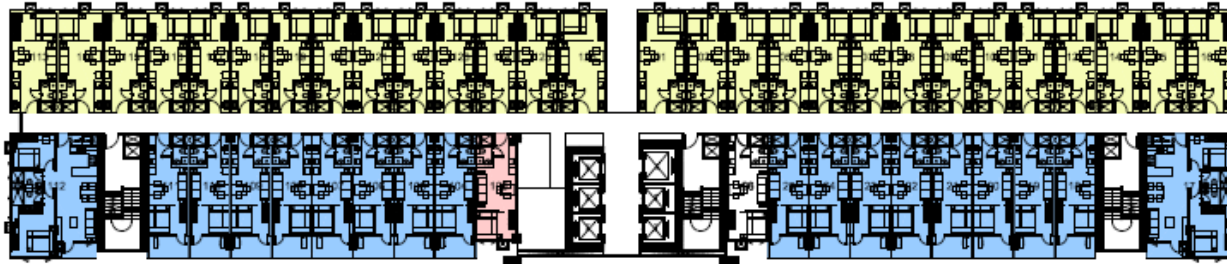
The good guys!

All information stated is intended to give a general overview of the project. The developer reserves the right to modify as it sees fit without prior notice. For Announcement Purposes Only.

Building B Floor Plan

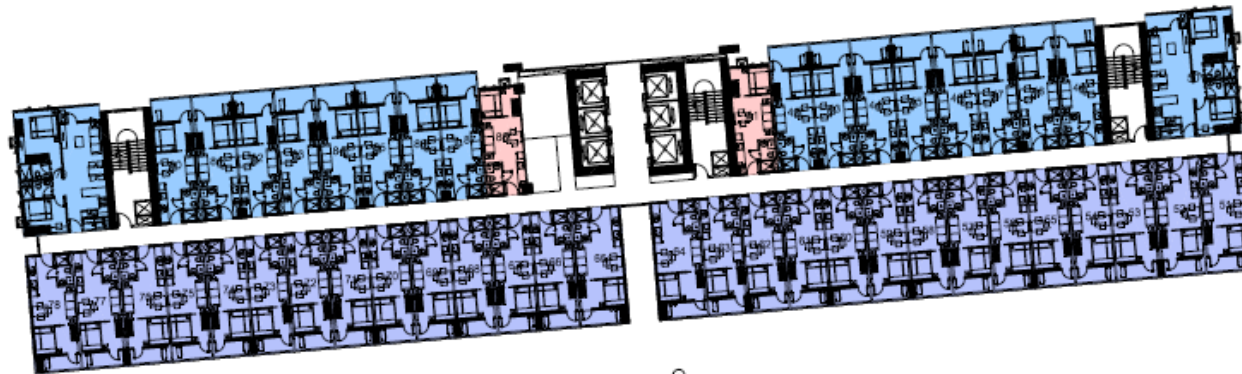
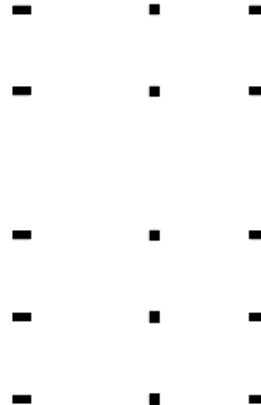
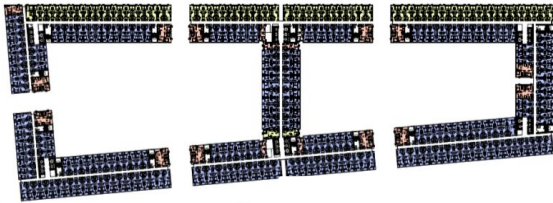


Building C Floor Plan



2ND FLOOR BUILDING C

- Garden Units
- 1-BEDROOM UNIT
- 1-BEDROOM UNIT W/ BALCONY



SMDC

The good guys!

All information stated is intended to give a general overview of the project. The developer reserves the right to modify as it sees fit without prior notice. For Announcement Purposes Only.

Building C Floor Plan



SMDC

The good guys!

All information stated is intended to give a general overview of the project. The developer reserves the right to modify as it sees fit without prior notice. For Announcement Purposes Only.

Building C Floor Plan

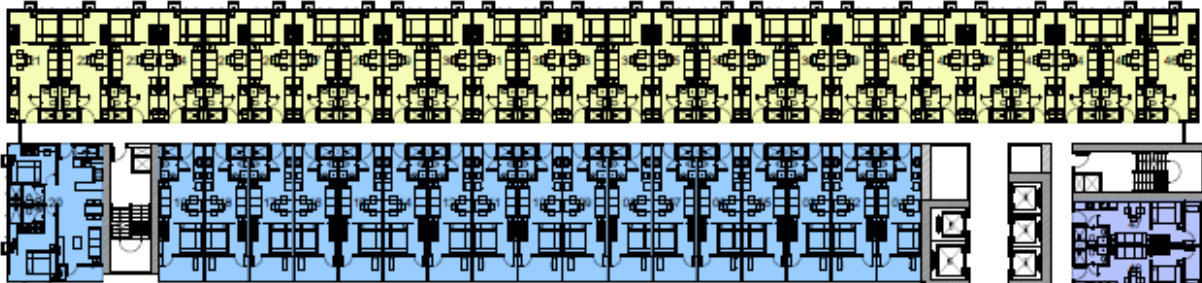


SMDC




The good guys!

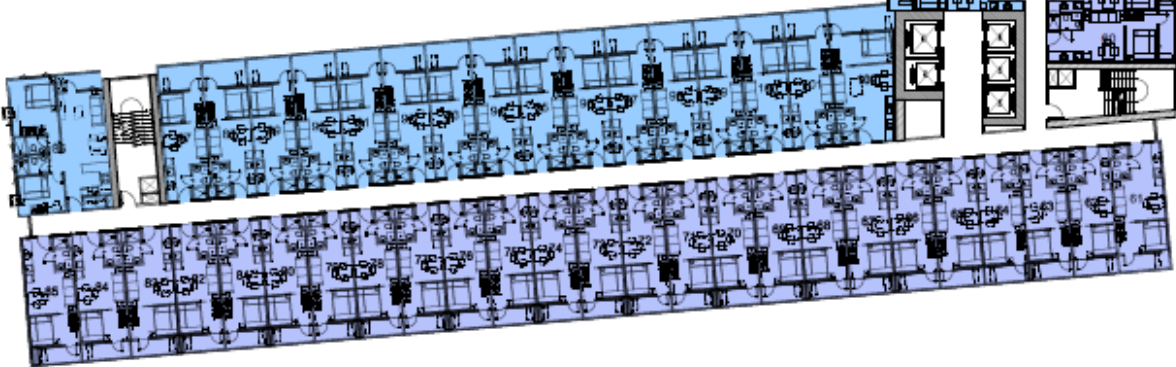
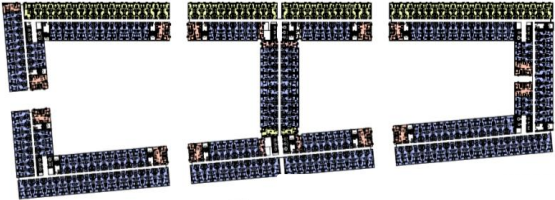
All information stated is intended to give a general overview of the project. The developer reserves the right to modify as it sees fit without prior notice. For Announcement Purposes Only.

Building D Floor Plans

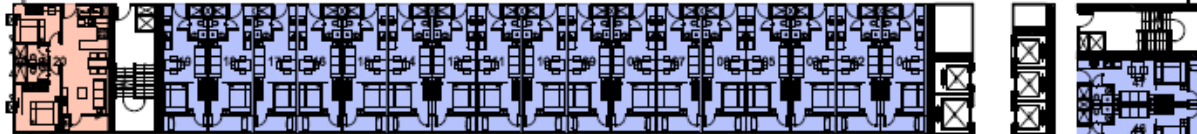
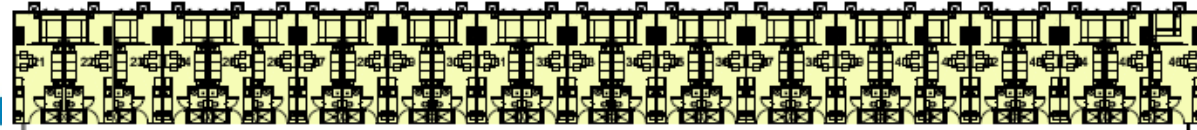


2ND FLOOR
BUILDING D

-  POOL UNIT
-  1-BEDROOM UNIT
-  1-BEDROOM UNIT W/ BALCONY

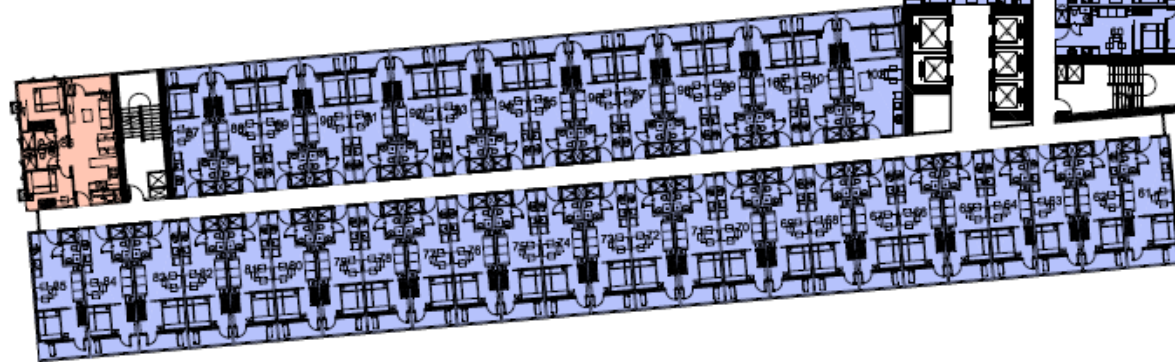
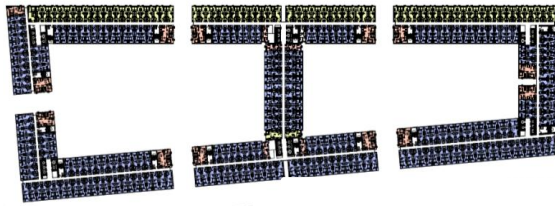


Building D Floor Plans

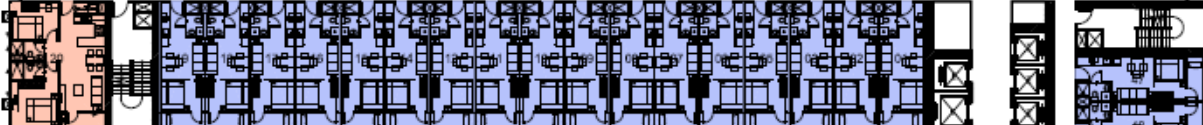
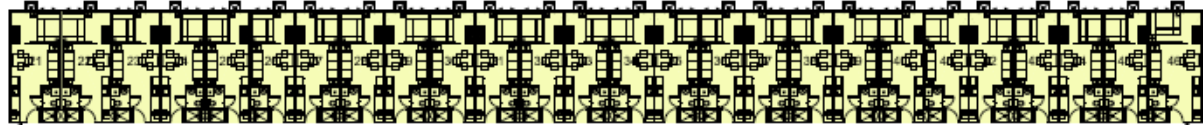


5TH - 9TH FLOOR
BUILDING D

- 1-BEDROOM UNIT
- 1-BEDROOM UNIT W/ BALCONY
- 2-BEDROOM UNIT W/ BALCONY

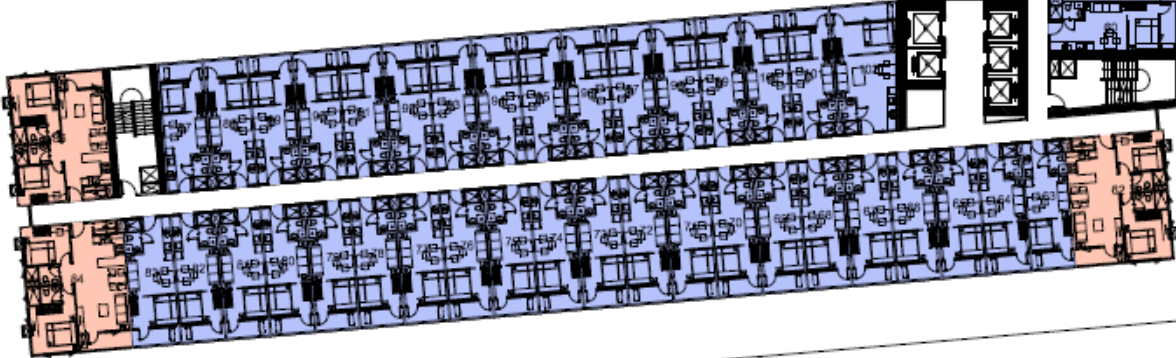
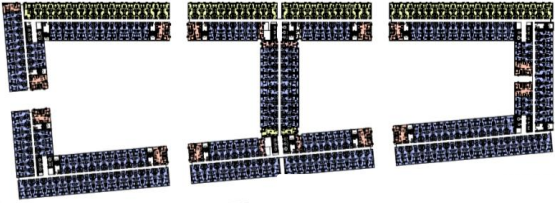


Building D Floor Plans



10TH - 19TH FLOOR
BUILDING D

- 1-BEDROOM UNIT
- 1-BEDROOM UNIT W/ BALCONY
- 2-BEDROOM UNIT W/ BALCONY





All information stated is intended to give a general overview of the project. The developer reserves the right to modify as it sees fit without prior notice. For Announcement Purposes Only.



All information stated is intended to give a general overview of the project. The developer reserves the right to modify as it sees fit without prior notice. For Announcement Purposes Only.

Amenities Podium

- Multiple Swimming Pools
- Lush Gardens
- Amenity Lounge
- Function Rooms
- Grand Lobbies
- Jogging Trail



All information stated is intended to give a general overview of the project. The developer reserves the right to modify as it sees fit without prior notice. For Announcement Purposes Only.



AMENITY LANDSCAPE PLAN

LEGEND:

- | | | |
|-------------------------|-------------------------------|-------------------|
| 1. Adult Pool | 7. Bridge | 12.Pool Deck |
| 2. Lap Pool | 8. Seating Area | 13.Jogging Path |
| 3. Great Lawn | 9. Multipurpose Playing Field | 14.Amenity Lounge |
| 4. Pavilion | 10.Palm Court | |
| 5. Children's Play Area | 11. Half Basketball Court | |
| 6. Beach Approach | | |

Amenities Podium



All information stated is intended to give a general overview of the project. The developer reserves the right to modify as it sees fit without prior notice. For Announcement Purposes Only.

Amenities Podium



All information stated is intended to give a general overview of the project. The developer reserves the right to modify as it sees fit without prior notice. For Announcement Purposes Only.

Amenities Podium



All information stated is intended to give a general overview of the project. The developer reserves the right to modify as it sees fit without prior notice. For Announcement Purposes Only.

Facilities and Utilities



- Automatic fire detection and alarm system
- Stand-by generator sets for common areas & selected residential outlets
- Sufficient fire exits
- 24 hour security (CCTV on selected areas)
- Provisions for Telephone and Cable TV
- Sufficient Elevators per Building

All information stated is intended to give a general overview of the project. The developer reserves the right to modify as it sees fit without prior notice. For Announcement Purposes Only.

Unit Finishes and Guidelines



All information stated is intended to give a general overview of the project. The developer reserves the right to modify as it sees fit without prior notice. For Announcement Purposes Only.

Unit Finishes

- **Wall Finishes**
 - Interior Walls: Painted Finish
 - T&B: combination of Tiles and Painted finish
 - Living & Dining: Painted Finish
- **Floor Finishes**
 - Living, Dining & Kitchen: 600x600 Homogeneous Tiles
 - T&B: 300x300 Vitrified Floor Tiles
 - Bedroom: 600x600 Homogeneous Tiles
 - Balcony: Vitrified Floor Tiles
- **Doors**
 - Main Door: steel molded or Laminated wood door
 - T&B: PVC Door/Laminated door
 - Bedroom (1br): Sliding glass door on laminated wood frame
 - Bedroom (2br): laminated wood door
- **Others**
 - Windows: tempered glass on powder coated aluminum or uPVC frame
 - Balcony Railing: powder coated aluminum
 - Kitchen Cabinets: laminated wood overhead and under counter cabinets
 - Granite kitchen countertop

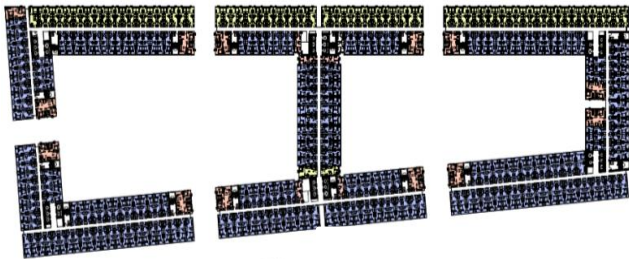
Typical Unit Layouts

All Buildings: Facing Amenities
Facing Manila Bay
Facing Manila / Manila Bay
Facing Cavite

Unit Area: 23.95sqm

Balcony Area: 3.72sqm

Total Area: 27.67sqm

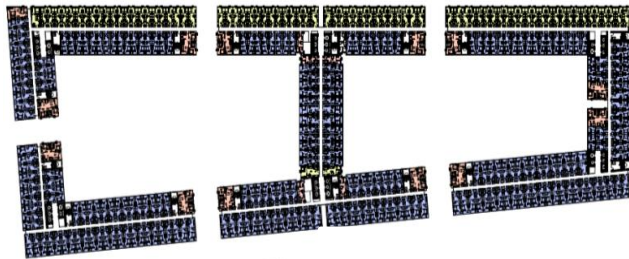


All information stated is intended to give a general overview of the project. The developer reserves the right to modify as it sees fit without prior notice. For Announcement Purposes Only

Typical Unit Layouts

All Buildings: Facing Amenities (2nd floor)
(pool/garden entry units)

Unit Area: 23.95sqm
Balcony Area: 5.58sqm
Total Area: 29.53sqm

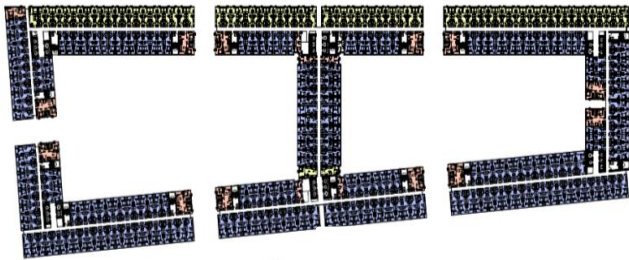


All information stated is intended to give a general overview of the project. The developer reserves the right to modify as it sees fit without prior notice. For Announcement Purposes Only

Typical Unit Layouts

Buildings B, C & D: Facing Makati

Unit Area: 24.10sqm
Balcony Area: 0.00sqm
Total Area: 24.10sqm

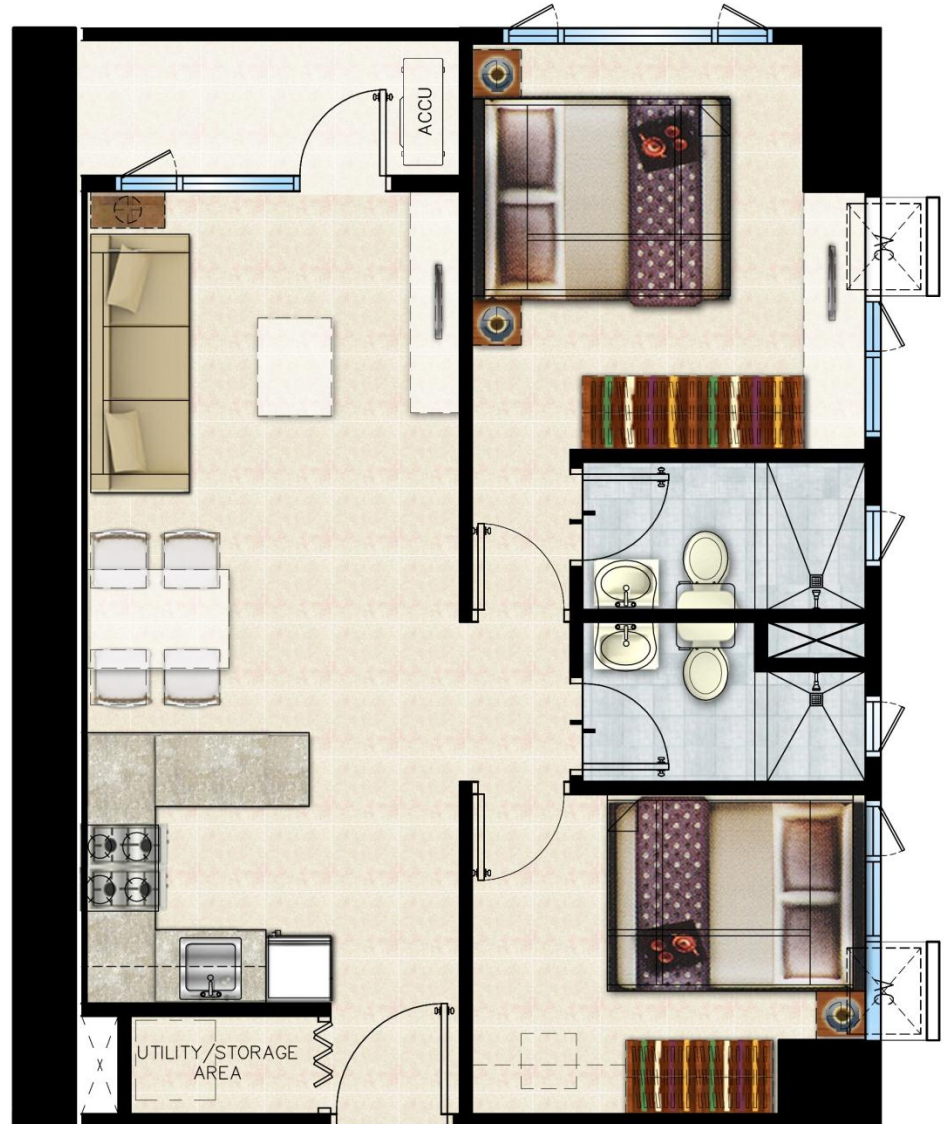
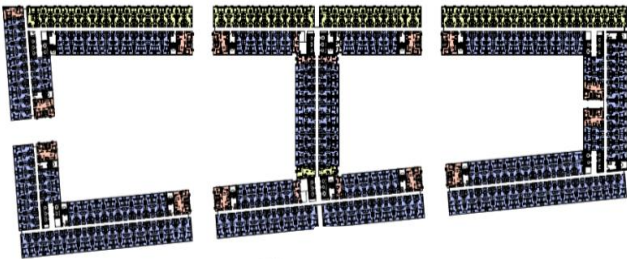


All information stated is intended to give a general overview of the project. The developer reserves the right to modify as it sees fit without prior notice. For Announcement Purposes Only

Typical Unit Layouts

All Buildings: 2-BR Units w/ balcony

Unit Area: 54.71sqm
Balcony Area: 3.75sqm
Total Area: 58.46sqm



All information stated is intended to give a general overview of the project. The developer reserves the right to modify as it sees fit without prior notice. For Announcement Purposes Only

Ceiling Height

Kitchen and Toilet & Bath



All information stated is intended to give a general overview of the project. The developer reserves the right to modify as it sees fit without prior notice. For Announcement Purposes Only

Ceiling Height

Living Room, Dining and Bedroom



All information stated is intended to give a general overview of the project. The developer reserves the right to modify as it sees fit without prior notice. For Announcement Purposes Only